

# DROPCARD WITH RETAIL RACK HANGER (3.375" X 4.875") - TEMPLATE

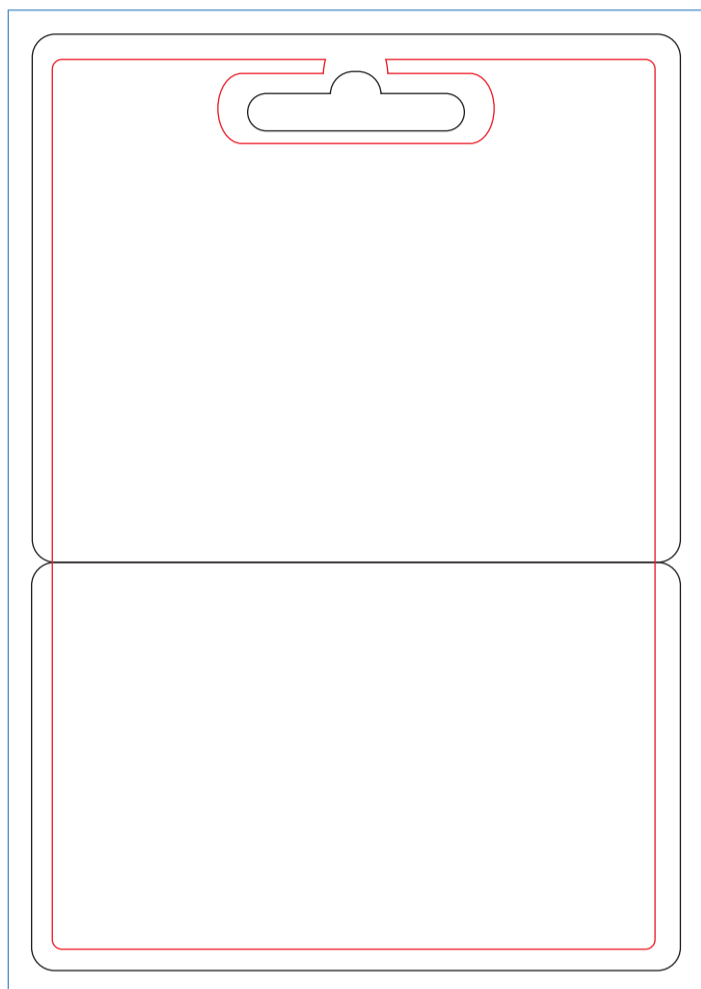
## TEMPLATE GUIDE:

**RED LINE:** Type safety (3.14" x 4.63"). Please make sure your text does not extend beyond this line.

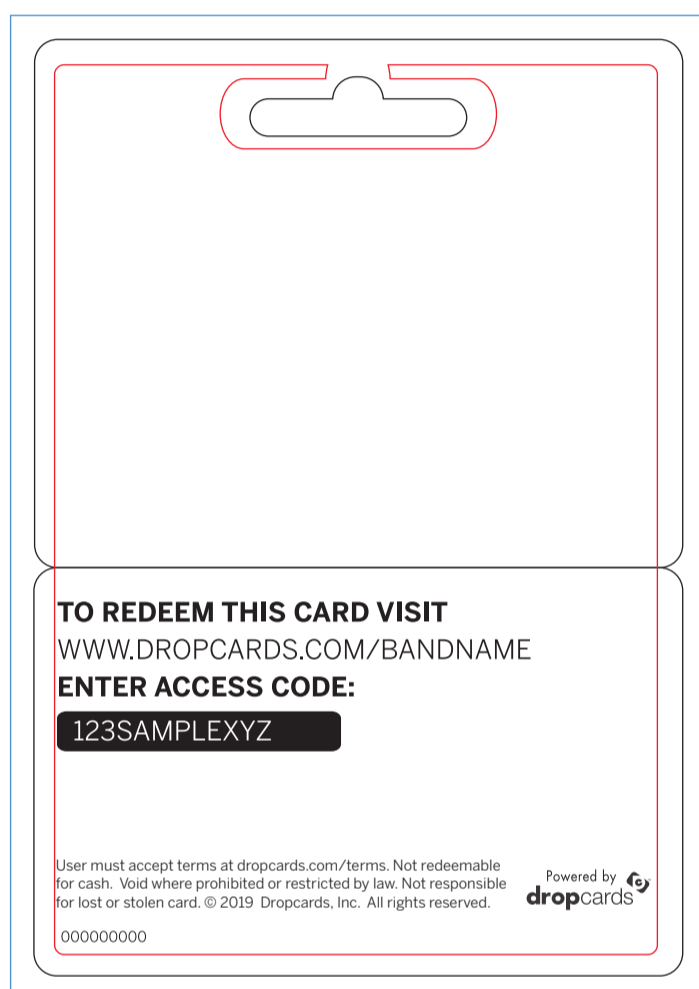
**BLACK LINE:** Final cut card size. (3.375" x 2.75")

**BLUE LINE:** Bleed. (3.625" x 5.126") Background graphics must extend to this line.

## CARD FRONT



## CARD BACK



## EDITING THIS CARD BACK:

You do not have to edit this card back. If you choose not to, we'll insert your URL.

### If you decide to edit the card back please make sure to include:

- 1) Basic instructions how how to redeem this card
- 2) Your redemption URL
- 3) A space for the access code. Note: Access codes are 10 digits and cannot be printed smaller than 6pt font. They are printed in a standard font like Arial or Helvetica only in either black or white

## Art Check List:

Before you submit your artwork for production, please make sure you have done the following:

- |   |   |
|---|---|
| <input type="checkbox"/> Proofread your art for spelling mistakes.            | <input type="checkbox"/> Not flattened the template layer to your artwork.    |
| <input type="checkbox"/> Made sure your image resolution is at least 300 DPI. | <input type="checkbox"/> Created the proper amount of bleed.                  |
| <input type="checkbox"/> Converted the image color mode to CMYK.              | <input type="checkbox"/> Made sure all text is within the type safety area.   |
| <input type="checkbox"/> (If using Adobe Illustrator) Outlined all fonts.     | <input type="checkbox"/> Made sure all layers are editable and intact.        |
| <input type="checkbox"/> (If using Adobe Illustrator) Embedded all images.    | <input type="checkbox"/> Saved your file with your project name in the title. |
| <input type="checkbox"/> Deleted all unused layers.                           | <input type="checkbox"/> Saved your file as a .PSD, .AI, .PDF, or .EPS file.  |